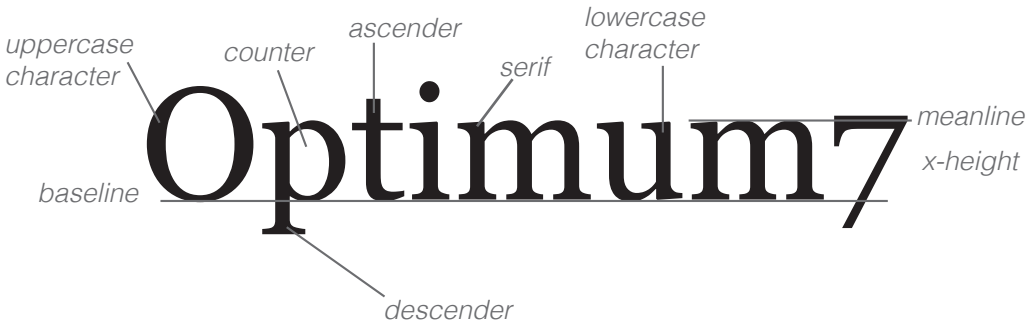
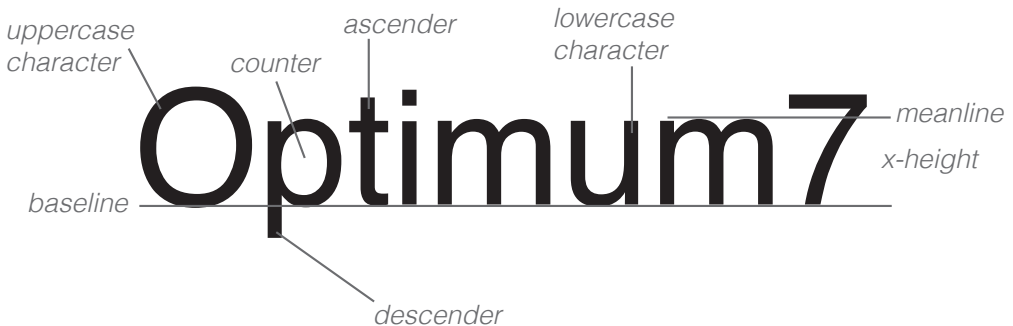


Glossary of Terms

1. **Baseline:** The imaginary line on which all the capitals and most of the lowercase characters appear to stand.
 2. **Meanline:** The imaginary line that marks the top of lowercase letters lacking ascenders.
 3. **Ascender:** The part of the lowercase letter that rises above the x-height.
 4. **Descender:** The part of the lowercase letter that falls below the baseline.
 5. **Counter:** The enclosed or hollow part of the letter.
 6. **Serif:** The short stroke that projects from the ends of the main strokes. Not all type has serifs; type without serifs is called sans serif, which is French for "without serif."
 7. **X-Height:** The height of the body, or main element, of the letterform. The x-height is actually the height of the lowercase x.
-



Uppercase and lowercase serif characters.



Uppercase and lowercase sans serif characters.